

# THE BLOSSOMS

## FLOWERS LANE



- |  |  |
|--|--|
| <span style="color: red;">■</span> Poppy<br>4 bed house          | <span style="color: blue;">■</span> Hazel<br>3 bed house     |
| <span style="color: yellow;">■</span> Primrose<br>4 bed house    | <span style="color: lightblue;">■</span> Lily<br>3 bed house |
| <span style="color: lightgreen;">■</span> Saffron<br>4 bed house | <span style="color: pink;">■</span> Orchid<br>3 bed house    |
| <span style="color: lightpink;">■</span> Willow<br>4 bed house   | <span style="color: cyan;">■</span> Rosemary<br>3 bed house  |
| <span style="color: lightblue;">■</span> Azalea<br>3 bed house   | <span style="color: orange;">■</span> Holly<br>2 bed house   |
| <span style="color: teal;">■</span> Jasmine<br>3 bed house       | <span style="color: purple;">■</span> Violet<br>2 bed house  |
|  | <span style="color: grey;">■</span> Affordable Rent          |

- Available
- sold/reserved



# THE BLOSSOMS

FLOWERS LANE

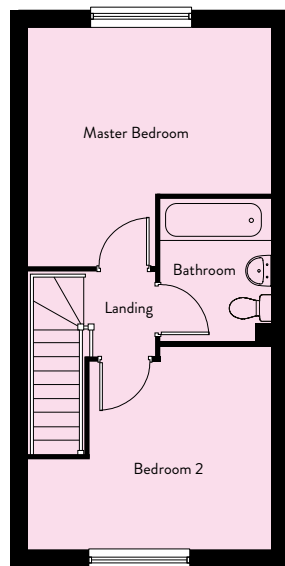
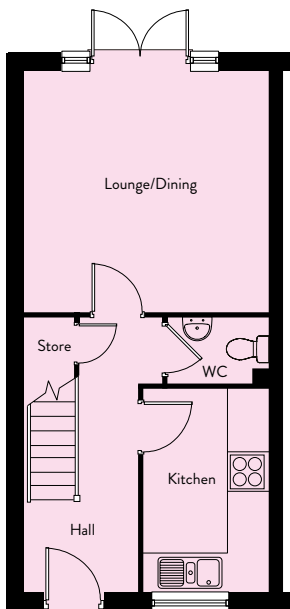
## Price List – available homes

Plot(s)	Description	House Type	Price	25% Share & Monthly Rent	50% Share & Monthly Rent	75% Share & Monthly Rent
300 313 314	2 bedroom semi detached	Violet	£220,000	£55,000 & £378.13	£110,000 & £252.08	£165,000 & £126.04
371	2 bedroom semi detached	Holly	£230,000	£57,500 & £395.31	£115,000 & £263.54	£172,500 & £131.77

£1,000 cashback available at sale completion!

**Disclaimer:** Values are reviewed every 3 months and are subject to change. A monthly service charge will apply. Prices, features and availability are correct at time of print but are subject to change without prior notice.

# VIOLET



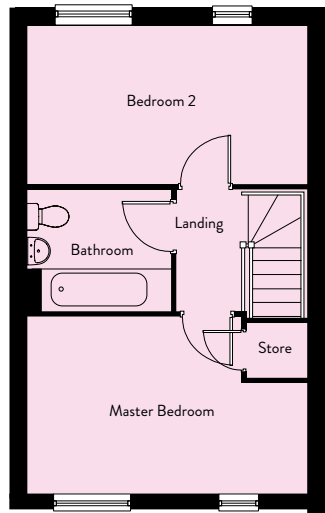
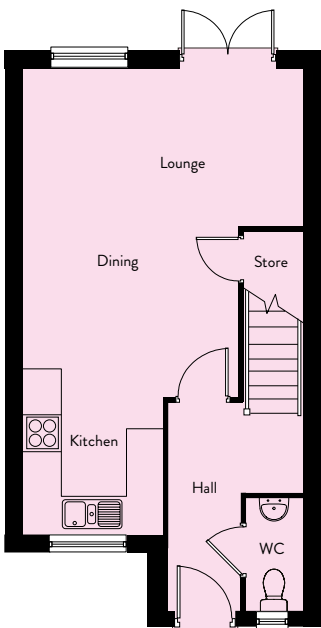
## Ground Floor

Lounge	4.07m x 3.97m	13'4" x 13'0"
Kitchen/Dining	3.31m x 2.07m	10'10" x 6'9"

## First Floor

Master Bedroom	4.07m x 2.78m	13'4" x 9'1"
Bedroom 2	4.07m x 3.33m	13'4" x 10'11"
Bathroom	2.36m x 1.75m	7'9" x 5'9"

# HOLLY



## Ground Floor

Lounge/Kitchen/ Dining	4.66m x 7.69m	15'4" x 25'3"
WC	0.90m x 1.81m	2'11" x 5'11"

## First Floor

Master Bedroom	4.66m x 2.91m	15'4" x 9'6"
Bedroom 2	4.66m x 2.62m	15'4" x 8'7"
Bathroom	2.41m x 2.04m	7'11" x 6'8"